



Field Report

Customer / Project information Rock Marine, Internal boat deck, Earnest II

Project Overview



After major a repair the internal deck required added strength with a non slip finish.

Industrial Customer

Rock Marine

Project Location

Rock, Cornwall

Applicator

LINE-X Cornwall
 T: +44 (0)1208 812312
 E: info@linexcornwall.co.uk
 W: www.linexcornwall.co.uk

Lining Formulation

LINE-X XS100, 100% Solids Polyurea Sprayed On Lining.

Lining Application System

Graco EXP2, Heated, High Pressure With Fusion Gun.

Substrate

Fibreglass



Field Report

Customer / Project information Rock Marine, Internal boat deck, Earnest II

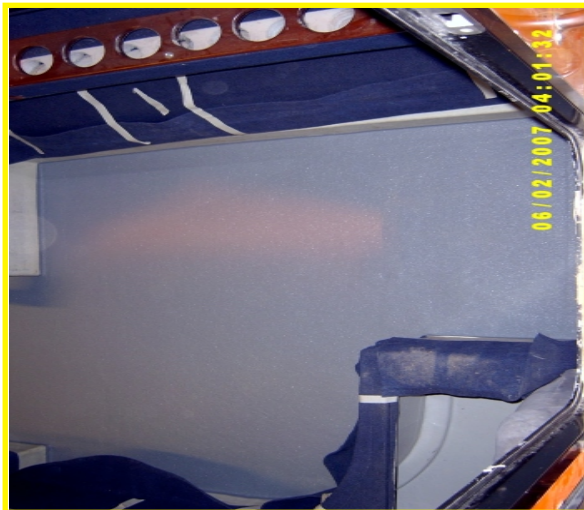
Situation Overview:

After extensive repairs to the hull of the boat Earnest II, Rock Marine needed a floor covering that was not only non-slip & waterproof but gave additional strength to the repaired deck.

The Solution

LINE-X XS100 (tack free time 3 to 5 seconds) was chosen due to its high strength & stretch properties.

The area was masked off, scuffed up & LINE-X applied.



The floor now is an attractive dark grey with a non-slip texture to help keep the boats occupants on their feet, The LINE-X gained a tenacious bond to the fibreglass substrate ensuring no ingress of water would be possible between the coating and the substrate. From start to finish the job took 5 hours & due to the fast cure times the staff from Rock Marine were able to re attach the carpet around the sides the same day.