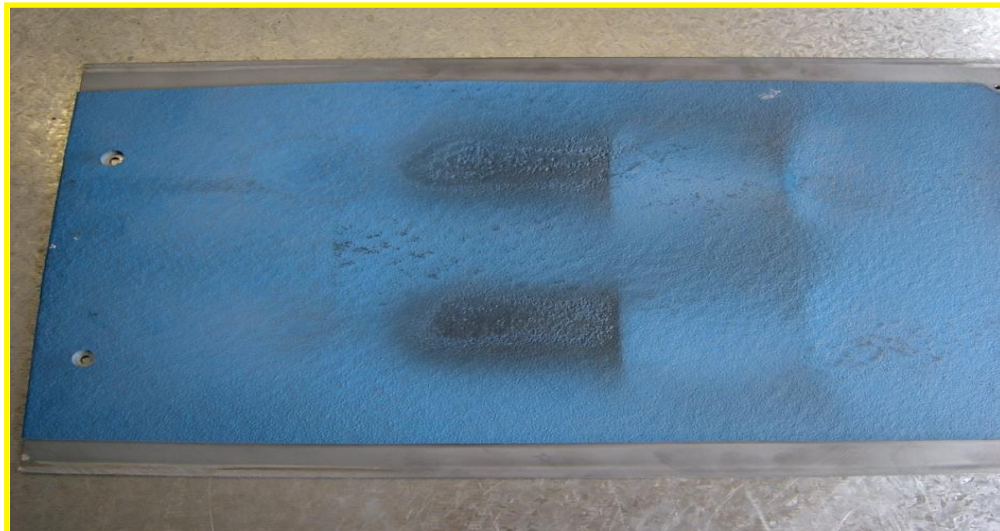


# Field Report

## Customer / Project information

Green Glass - Sand Blast Panel

### Project Overview



Wear plate for sand blast cabinet.

### Industrial Customer

The Green Glass Company

### Project Location

Wadebridge, Cornwall

### Applicator

LINE-X Cornwall  
 T: +44 (0)1208 812312  
 E: [info@linexcornwall.co.uk](mailto:info@linexcornwall.co.uk)  
 W: [www.linexcornwall.co.uk](http://www.linexcornwall.co.uk)

### Lining Formulation

LINE-X XS100, 100% Solids Polyurea Sprayed On Lining.

### Lining Application System

Graco EXP2, Heated, High Pressure With Fusion Gun.

### Substrate

Galvanised Steel



# Field Report

## Customer / Project information

Green Glass - Sand Blast Panel

### Situation Overview:

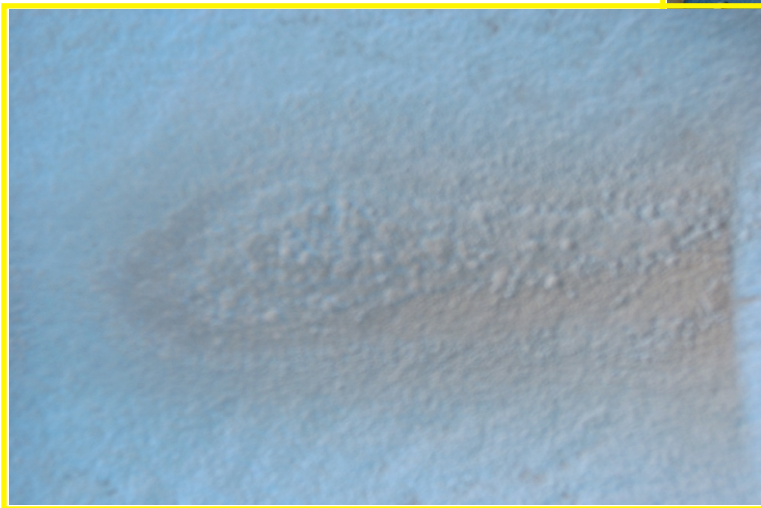
Our sister company (Kernow Metal Products) used to supply The Green Glass Company with 3mm thick steel panels for their sand blast cabinet and would get worn through at a rate of approximately one every six weeks

### The Solution

LINE-X XS100 was chosen due to its high impact absorption properties.



We used a 1.5mm galvanized steel panel. The panel was shot blasted to increase the surface profile, primed then sprayed with 5mm thick with LINE-X XS100, (Tack Free between 3-5 seconds, Full Cure Hardness in 24 hours).



The panel was subject to high pressure sand blasting for a period of exactly six months after which it was returned to us for evaluation.

The results were outstanding, in the six months of use only 2.5mm thickness of the LINE-X had been worn away in the harshest hit areas.

Compared to the steel panels the 5mm thick LINE-X would have lasted a full 12 months, in this time 9 of the 3mm thick steel panels would have been replaced.

Proving that LINE-X not only saves money by lasting longer but also by reducing loss of production due to machine down time.